

# CountryPlace

Community Association Newsletter

Spring 2011

## From The President's Corner

Hello to Country Place from your Exec!!!

After a long winter and a spring that seemed to take forever to come, it is finally safe to take off the snow tires and rake up the gardens – Spring is here! And with that comes our Spring 2011 newsletter.

We have been very busy since officially stepping up last fall. Our first official community event was Christmas Carolling where over 300 canned goods and over \$130 were raised! The SnowBall Social followed shortly after, where close to 55 residents ate & danced until 1 a.m. We have also been working with the city on the Prince of Wales widening project, the OC Transpo bus cuts, lights in the park and neighbourhood safety. It has been a busy first six months but we have enjoyed learning about our community, city and meeting many of you!

We would also like to recognize the continued hard work of our executive members and street representatives who deliver newsletters, help with the membership drive and communicate your concerns. A special shout-out should go to Timothy Lethbridge who has been working above and beyond to make sure the Country Place voice is heard both on the Prince of Wales and OC Transpo issues. Tim was even featured on TV speaking out against losing the 176/116 buses in our neighbourhood – well done!

We anticipate the spring to be just as busy, so we are looking for residents who would like to join and volunteer to help with an event during the year. Joining in on our events is a great way to meet neighbours, learn about your city and community and have fun! We have included a "Volunteer" form in this newsletter. Should you wish to

volunteer, simply fill in your contact information and the area or event that interests you and drop the form in your street rep's mailbox; or simply fill it out online at [www.countryplaceca.ca](http://www.countryplaceca.ca).

Happy spring, Cindy & Anne

## SPRING EVENTS

### Park Clean Up – Saturday May 7th 9:30am – Meet at the Park Hut

Bring the whole family out and join your fellow neighbours to clear away the remnants of winter and make Country Place look great for the upcoming spring and summer! Meet at the hut in the Park at 9:30 a.m. for instructions and supplies. Please bring your work gloves and rakes. The city provides the rest! Remember, many hands make light work!!! This is a great activity for teenagers, but we need adults too.

Rain Day – Sunday May 8th (same time and place)

### Community Fun Day Saturday June 4<sup>th</sup>

Save the date and book this into your calendar's now! You don't want to miss this great day of neighbourhood fun to kick-off your summer season! This year we are looking for new ideas to make this fun for all age groups. If you have any additional ideas, please e-mail [countryplaceca@gmail.com](mailto:countryplaceca@gmail.com).

A flyer will be distributed the week before the event with all of the details.

#### Call for Volunteers for Community Fun Day

The Association cannot run this event alone and we are looking for neighbours who want to run or could help run



#### Highlights in this Newsletter:

Spring Events (Clean up, Fun Day, Garage Sale) .....	1
Ongoing Activities .....	2
Prince of Wales Widening .....	2
OC Transpo Route Optimization .....	3
Lights in the Park .....	4
A Look Back at Winter Events .....	5
Update from Councillor Egli .....	6
For a Safe and Clean Community .....	6

throughout the day. If you would like to volunteer please e-mail the executive at [countryplaceca@gmail.com](mailto:countryplaceca@gmail.com).

## Garage Sale – Saturday June 11<sup>th</sup>

This year's Garage sale will be even bigger & better – we are planning to combine with "The Glens" community! Together both communities will be advertising in local papers and put out signage to support this event. Join in on this Ottawa tradition! Start saving up those old items that could be new items for someone else! Remember shoppers can start as early as 7am!

### ONGOING ACTIVITIES

## Knoxdale-Merivale Community Association

The Country Place Community Association has joined the broader Knoxdale-Merivale Community Association (KMCA). The KMCA was formed after James O'Grady (city councillor candidate back in the fall) contacted all of the community association presidents in Ward 9 last year to see if they would be interested in getting together informally every few months to share experiences, ideas and expertise.

Five community associations responded positively and so for a year now they have been meeting quarterly to share information. Fisher Heights joined after the municipal election and we Country Place are now on board.

## Ice Rink – Help Wanted For Next Winter

Country Place will be looking for a new family to take over from (or work with) the Nimmos next year in order to keep our ice rink running. The Nimmos' children are all grown up and it is time to pass on the torch (or part of it) to a new family or families who has interest in hockey or skating. If you would be interested in working with the Nimmos please contact the association at [countryplaceca@gmail.com](mailto:countryplaceca@gmail.com).

Note: if we do not have a family step up there is a risk we may not be able to maintain the rink as we currently have it!

## Incidents In The Neighbourhood

Over the past few months we have had several incidents reported to the Community Association. The instances ranged from vandalism and property damage to drugs in our park hut. While the goal would be to eliminate these issues, the reality is that no community is perfect. But reporting these issues does help to reduce them. Earlier

this year we reported one of these issues and it led to increased police surveillance in our park and established what the police call "history".

We encourage all residents who witness an incident to continue to contact the Association and to call one of the following numbers:

For vandalism (or a situation where police are not required to visit right away): 613-236-1222 ext.7300

For non-life threatening emergencies (but when police should come – drugs/alcohol): 613-230-6211

## Neighbourhood Watch



The Country Place Community Association has recently looked into reviving the Neighbourhood Watch program for our community.

There is a scheduled meeting for the end of this month. During this meeting we will gather the registration list and forms in order to distribute to our community. This will be done in coordination with our fall collection of dues. If you have any questions, please email the executive team at [countryplacaca@gmail.com](mailto:countryplacaca@gmail.com).

Details on Neighbourhood Watch can be found at <http://www.ottawapolice.ca/en/crimeprevention/neighbourhoodwatch/index.aspx>.

## Playgroup

The playgroup led by Jasmine Albagli continues to meet regularly. Planned events are April 27<sup>th</sup>, May 25<sup>th</sup>, June 22<sup>nd</sup>, July 27<sup>th</sup> and August 24<sup>th</sup> in the park, and also May 11<sup>th</sup>, June 8<sup>th</sup>, July 13<sup>th</sup> and August 10<sup>th</sup> in someone's home. If you and your baby and/or tot would like to join the next playgroup please contact Jasmine at 613-680-0828 or email her at [jasmine@jasminephotography.ca](mailto:jasmine@jasminephotography.ca).

### CURRENT ISSUES

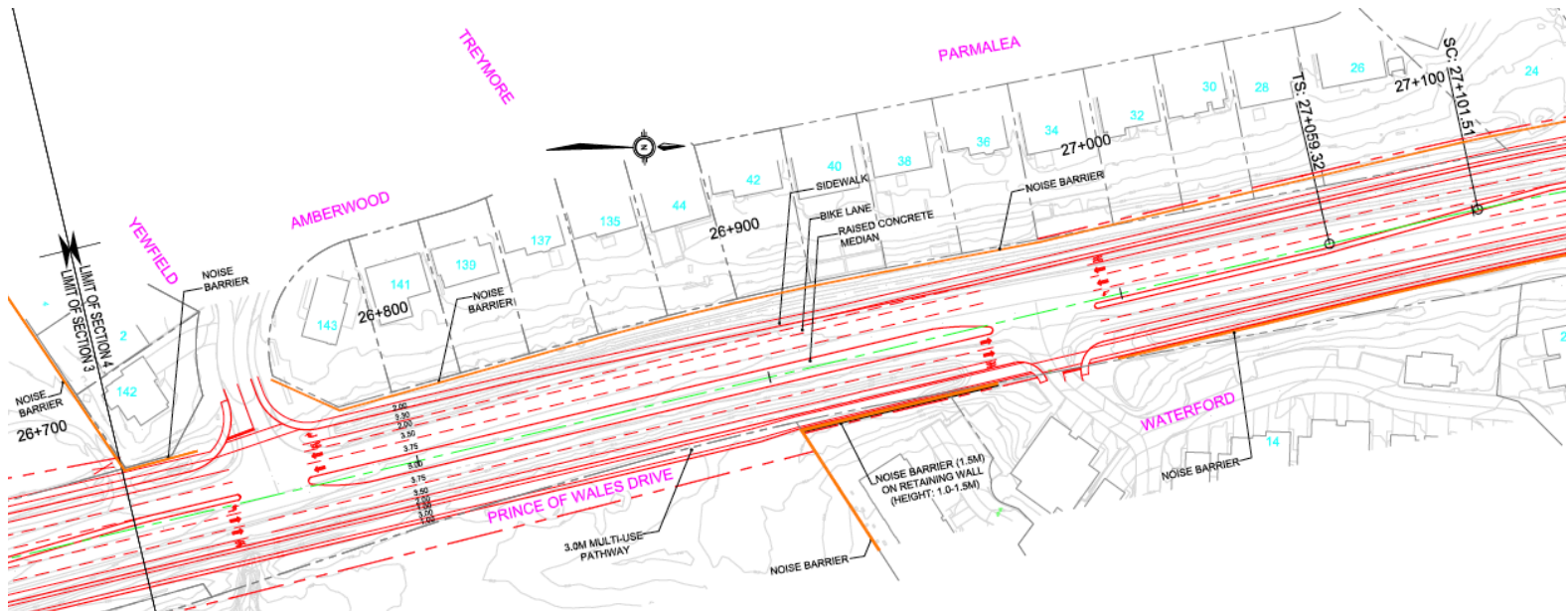
## Prince of Wales Widening

There has been a lot of activity this winter regarding the planned widening of Prince of Wales Drive to four lanes.

The widening itself is not planned to occur for several years. It could be as many as 10-12 years, although residents in communities south of us are pushing for the work to be completed earlier.

## Traffic Lights at Amberwood

The plans now definitely show a traffic light at Amberwood, allowing us all to more safely turn left, and also allowing pedestrians to cross.



### Sidewalk and pathway

The plans continue to show a sidewalk along the west side of the road, all the way from Blacks Rapids to Fisher. In addition there is a wider multi-use pathway on the east side. These are visible on the map above.

We have argued that the sidewalk on the west side, between Blazer and Amberwood, should be dropped, to reduce the total width of the land needed for the roadway, and hence reduce the need for expropriation – more on that below. If you have opinions about this please email [countryplaceca@gmail.com](mailto:countryplaceca@gmail.com).

### Noise Barrier

Plans also call for a high ‘noise barrier’ behind the houses that back onto Prince of Wales. This will very significantly reduce traffic noise but will also shade people’s backyards.

Unfortunately, the noise barrier will also run directly behind a few houses which back onto the farmer’s field on Yewfield and the end of Amberwood (see the map above). The Community Association has been lobbying for this noise barrier to continue straight along Prince of Wales for a short distance, rather than take a sharp turn and run directly behind the houses (where it is referred to as a ‘reverse’ noise barrier).

The engineers have not yet listened to our complaints, citing the need to prevent blocking the view of the Greenbelt from people driving along Prince of Wales. We have suggested they use a transparent material, similar to Plexiglas, that is designed specifically for noise barriers in areas where there is a need to preserve the view. However, they have rejected this as too costly to build and maintain (it needs cleaning).

### Expropriation

There are plans for a certain amount of expropriation of the lands behind a few houses at the end of Parmalea. We have been arguing that removing the sidewalk, and making various other design changes could minimize this expropriation.

The impact of expropriation is much greater on neighbouring properties in Pine Glen, and also the Waterford development on the opposite side of Prince of Wales. We have been working with these two communities to jointly lobby the city.

### Upcoming Events

The next major step in the process of widening Prince of Wales is approval by the City Transportation Committee. The vote is currently scheduled for June 1, although it has been changed twice already. After this vote, the alignment and many other details would be ‘cast in stone’, so would be very hard to change later. We will be making a presentation to Transportation Committee on issues such as the sidewalk.

Several members of Transportation Committee will be visiting the area for an in-person site visit at the end of April. Community Association representatives will discuss the matter with them at that time.

## OC Transpo Route Optimization

As many of you know, OC Transpo has been mandated by city council to save millions of dollars by ‘optimizing’ its route network. This means, among other things, that they had to realign some routes so they avoided segments that were poorly used or were overly slow. This would mean increased walks or connections for some transit users.



they were wholly in support of having lights installed, since their houses have been subjected to vandalism from persons in the park, some on many occasions. One resident responded against the proposal.

The Association President brought the matter up with Councillor Egli. As a result we received the following pertinent information from the City on March 14:

The City has a park and pathway lighting policy that limits lighting to some very specific situations where the pathway through the park is the only reasonable pedestrian route and where lighting will not only allow the pedestrian to be seen, but will also allow neighbours to see the pedestrian. The Parks and Recreation Department conducted a review of Country Place Park and confirmed that lighting would not conform to the policy since there is no critical pedestrian transportation link through this park, and there are ample and convenient alternatives on the roadways.

Rink lighting is installed for a very specific purpose, and the location and intensity of the lighting is not intended to address safety needs. Notably, at this site the lighting would be at one end of the park thereby creating a bright area and a dark area where activity is further masked by the bright lights. Funding to operate rink lights is only geared towards the December to February rink season, and with the escalation in hydro costs, any incremental use of these lights would require an increase to Public Work's utility budgets if the lights were to be on every night of the year.

Similar requests across the City for a variety of reasons (safety, dog walking at night, night time use of basketball courts) have also been turned down because of potential cost to the City of having lights on beyond the rink season.

#### **Additional Police Presence at Country Place Park Due to Unwanted Activity**

A request has been submitted for extra police presence at the park due to the activities happening in the park. When people notice this activity occurring, the new community officer advises that it is best to submit a report to help them to identify problem areas, track follow-ups and deploy resources appropriately. Any information provided about specific times and days of the week would be most helpful. A report can be filed with the Call Centre at (613) 236-1222 extension 7300. In addition to this, Councillor Egli will be working with the Corporate Security department to deploy some of their devices this spring/summer to assist in this matter.

The result of a recent site investigation by the City, and confirmation of their strategy, is posted on the Country Place website [www.countryplaceca.ca](http://www.countryplaceca.ca). The Community

Association will continue to interact with the City on this matter.

## **A LOOK BACK AT WINTER EVENTS**

### **SnowBall Social**

On Friday January 21, 55 residents attended the first snowball social, a chance to catch up with the neighbours and chase away the January blahs. The event was held at Tulips and Maple just down Merivale road. The idea was to highlight a neighbourhood business.

The evening consisted of canapés, chat and kicking up ones heels (to the sounds provided by the Quality Entertainment DJ). The event was enjoyed by all who attended and the CP executive are looking for feedback as to whether this should become an annual event. Thanks the staff at Tulips and Maple for all their help in planning the party.

We would like to take this opportunity to thank all of the businesses who provided door prizes and sponsorship for our Snowball Social, including H&R Pizza and Wings, Silpada Sterling Silver Jewelry and Al's Steak House. Information on all of these businesses can be found on our website [www.countryplaceca.ca](http://www.countryplaceca.ca). Thank you again for your support in making Jan 21st a great night!

### **Carolling**

A small but intrepid band of 14 carollers set out on Sunday December 19th to bring the sounds of the season to the community and also to collect donations for the food bank.



After close to two hours of singing and collecting, the group had completed about 1/4 of Country Place and had collected 320 food items and over \$130.00 for the Ottawa Food Bank. Thanks to all residents who donated and to our new Councillor, Keith Egli, who dropped by to donate food as well.

The Carollers were warmed by hot chocolate donated by Tim Horton's at 1910 Merivale. Thanks to the staff at Timmy's. We certainly appreciated it!

### **Skating Rink Season**

Once again, Jill and Steve Nimmo and their teenage rink attendants provided many hours of work to ensure the

neighbourhood had a place to skate and play ice hockey from December to March. In fact the Nimmos maintained two ice surfaces, the hockey rink and another surface over the basketball court. They could be found as late as midnight out flooding the surfaces to ensure that skaters would have good surfaces to skate on the next day.

Attendance was down slightly from previous years. We have to provide daily attendance statistics to the City of Ottawa recreation department who provide the funding and infrastructure for the rink operation. This year the City also painted the inside of the change shack which has been in need of sprucing up for several years. The City will also return in the spring to perform some further maintenance of the shack.

Appleseed Snow Removal also deserves thanks for clearing the snow from the rink and nearby paths as a community service for our neighbourhood. Your services were truly appreciated.

Finally, after close to 10 years of hard work setting up the rink, maintaining it and managing the staffing of the rink, the Nimmos have decided to hand the duties on to some other residents. We are looking for other families to continue this winter tradition. Please contact the CP executive to volunteer. If no volunteers are found, we will not be able to provide this recreational activity in the community next year.

Thanks to the Nimmos for all their hard work and dedication over the years. We all owe you a lot for your devotion to making Country Place a better place to live. The Nimmos were guests of the Community at the Snowball Social in January as a very small token of our gratitude for a job well done.

## **FROM YOUR REPRESENTATIVE**

### **Update From Councillor Egli**

It's been a very busy couple of months at City Hall and in the Ward. Since taking office in December 2010 I have had the opportunity to meet with and hear from several residents of Country Place community. I want to take this opportunity to sincerely thank the many of you who have contacted me over the last five months to offer feedback, express concerns and provide ideas on issues related our ward and our city. Your participation is highly encouraged and your input always valued. Please do not hesitate to contact my office at any time at 613-580-2479 or by email at [ward9@ottawa.ca](mailto:ward9@ottawa.ca).

Now that spring has officially begun, so too does the planning of many exciting outdoor spring events in the ward. I am encouraging all residents of Knoxdale-Merivale to join the City's Spring Cleaning the Capital

Team. It's easy to get involved and with your help, Ward 9 Knoxdale-Merivale can be the cleanest ward in the city. Country Place Community Association will be holding its annual Spring Clean Up on May 7th at Country Place Park at 9:30 a.m. Please see the first page of this newsletter for more information.

I would also like to take this opportunity to invite you to the Ward 9 Spring Open House I am holding on Tuesday April 26, 2011 at the Nepean Sportsplex (Halls C & D) from 7:00 p.m. to 9:00 p.m. All residents are invited and I welcome any ideas, opinions or concerns you might wish to share regarding any ward or city related issue. I have also invited city staff from the Public Works Departments and Infrastructure Services Department who will be on site to answer any questions or address any concerns that residents may have regarding the following: Winter Operations (snow removal and salting procedures), the Knoxdale Road Sewer Replacement Project and the Woodroffe Avenue Sewer Upgrade Project.

I am also happy to announce that on Saturday June 18th from 11:00 a.m. – 3:00 p.m. I will be holding a Ward 9 Community Family Fun Day at the Trend-Arlington Community Centre and Park, 50 Bellman Drive. There will be a variety of games and activities, arts and crafts, exciting entertainment and delicious food for the whole family to enjoy. We are also recruiting volunteers for the Ward 9 Community Family Fun Day. If you are interested or know of someone who may be interested in completing volunteer hours please contact my office at 613-580-2479 or by email at [ward9@ottawa.ca](mailto:ward9@ottawa.ca). Hope to see you there.

Sincerely, Keith Egli  
Councillor, Ward 9 Knoxdale-Merivale

## **FOR A SAFE AND CLEAN COMMUNITY**

### **Speeding Always an Issue**

Speeding in the community is a continuous issue. We can all please help by: a) Monitoring your own speed; b) Politely reminding your neighbours, friends and relatives to slow down if you notice them speeding.

The Pine Glen community association has kindly informed our executive to be cautious while driving through the Pine Glen area as they have asked to have regular speed monitoring for their area. Please drive with caution at all times.

### **Stoop and Scoop!**

Pet owners are reminded and encouraged to please clean up after your pet does its business. Thank you for keeping our community clean and for being sensitive to others.

The City website gives a lot of good information [http://ottawa.ca/residents/animal\\_care/cats\\_dogs/dogs/stoop/stoop\\_scoop\\_en.html](http://ottawa.ca/residents/animal_care/cats_dogs/dogs/stoop/stoop_scoop_en.html)

Here are some highlights from the city stoop and scoop website:

**It's a health hazard:** It exposes children and other pets to parasites such as roundworms as well as bacterial infections.

**It's an environmental hazard:** Heavy rains wash dilute dog waste into the storm sewers, which flow untreated into the rivers. Dog waste contributes to the river's bacterial content, polluting beaches and degrading the environment for fish, wildlife and people.

**It's responsible:** If everybody cleans up after dogs, public opinion of dogs and dog ownership will be more positive.

Note: Dog waste cannot be put in the green bin; it should ideally be flushed down the toilet. However, cat waste can be put in green bins.

As for cats, cat owners are required by the city to take responsibility for their whereabouts. For sanitary reasons, everyone should keep kids' sand boxes covered so cats don't find them attractive sites to do their business.

## Dogs Not on a Leash

Several residents have noticed that owners are not putting leash on their dogs while just standing outside, talking to friends/neighbours or loading and unloading their car.

This, of course, allows dogs to run to people and jump all over them. This is all friendly, but when one does not see it coming or the dog happens to be quite big, the sudden movement and charging across the street can be frightening, and could cause an accident.

The law in Ontario requires that dogs must be on leash while out of their home.

## NOTICES

### Babysitter Request

A resident is looking for a part-time student/babysitter, ideally from our neighbourhood, for our 2 boys - 4 and 1 yrs old (Mon-Fri) to come to their home between the hours of 3 or 3:30 until 6 or 6:30 p.m. starting in the middle of May. For additional details please contact Branka at 613.565.2149.

### Toy Testing Volunteers Sought

The Canadian Toy Testing Council is looking for families to test toys in their homes!

Visit [www.toy-testing.org](http://www.toy-testing.org) for more information

## Country Place Email List

If you are not on the electronic list to receive regular updates from the Community Association please email Tim Lethbridge at [timothyclethbridge@gmail.com](mailto:timothyclethbridge@gmail.com) and please include your street address in your request. Everyone in your household can be a member of this list separately so you can all be kept informed. If you have a Google account, you can request membership and see messages at <https://groups.google.com/group/country-place-residents/>.

If you use an RSS reader, you can also subscribe to the group's feed at [https://groups.google.com/group/country-place-residents/feed/rss\\_v2\\_0\\_msgs.xml](https://groups.google.com/group/country-place-residents/feed/rss_v2_0_msgs.xml)

## Articles for Future Newsletters?

Tim Lethbridge has edited this issue of the newsletter. If you have any contributions for future newsletters, please email the Association at [countryplaceca@gmail.com](mailto:countryplaceca@gmail.com) or phone Tim and Tam at 613-237-6642.



**HEALTHY SOLES**  
 KATHRYN HENEY R.N.  
 VISITING FOOT CARE NURSE

**6 1 3 8 6 7 7 4 3 5**

FOOT ASSESSMENT	CORN & CALLOUS CARE
NAIL TRIMMING & FILING	EDUCATION
	<a href="mailto:HEALTHYSOLES@BELL.NET">HEALTHYSOLES@BELL.NET</a>

**Executive Committee Members 2010/2011**

**President** .....Cindy McGuire 680-0930

**Vice President**..... Anne O'Higgins 421-7098

**Secretary** ..... Sue Turpin 228-6796

**Treasurer** ..... Charlie Inglis 226-6276

**Other community association volunteers**

Communications ..... Tim & Tam Lethbridge 237-6642

Street Rep Coordinator.....Colin Wooles 723-0853

Rink ..... Steve & Jill Nimmo 228-0702

Signs & Business Liaison.. Louise Staranczak 224-3660

Email: [countryplaceca@gmail.com](mailto:countryplaceca@gmail.com)

## Street Representatives

The following are your street representatives. They help the Community Association by

- Serving as liaison with the Community Association executive on behalf of the residents in your area
- Delivering newsletters and information flyers to block residents (2 or 3 times per year)

- Collecting annual membership dues for your block
- Occasionally participating with other Street Reps on working groups, and
- Attending Community Association Street Rep meetings (a couple of times a year).

Colin Wooles is Street Rep coordinator. He can be reached at 613-723-0853.

## Current Street Reps

Amberwood Cres 6-28	Liz Eidsness	15 Amberwood Cres	565-6999
Amberwood Cres 29-44	John Kaczmarek	30 Amberwood Cres	727-0975
Amberwood Cres 44-61	Lissy Woboditsch	61 Amberwood Cres	
Amberwood Cres 62-77	Barb Mews	70 Amberwood Cres	727-6973
Amberwood Cres 86-98	Dawn McLeod	75 Amberwood Cres	224-9726
Amberwood Cres 102-113	Marc Zucker	110 Amberwood Cres	274-7641
Amberwood Cres 118-132	Eric Perron	118 Amberwood Cres	422-4929
Amberwood Cres 135-143	Jasmine Hansen	136 Amberwood Cres	680-0828
Broad Oaks Court	Dana Petrie	19 Broad Oaks Court	224-8955
Calais Court	Tim & Tam Lethbridge	7 Calais Court	237-6642
Campfield Court	Louise Staranczak	5 Campfield Court	224-3660
Charnwood Court	Martha Leahy	13 Charnwood Court	226-5905
Chesswood Court	Beth Osborne	22 Chesswood Court	228-7899
Cordell Court	Sushma Barewal	8 Cordell Court	226-5990
Denewood Cres 2-16 even & 3-25 odd	Sarah McCaughern	25 Denewood Cres	226-5487
Denewood Cres 18-26 even & 27-43 odd	Marilyn Journeaux	35 Denewood Cres	226-7333
Edenbrook Court	Shirley Fullarton	18 Edenbrook	226-5325
Erinlea Court	Charlie Inglis	7 Erinlea Court	226-6276
Fifeshire Cres 3-18	Anne O'Higgins	25 Fifeshire Cres	421-7098
Fifeshire Cres 20-28 even & 19-37 odd	Hilary Allen	22 Fifeshire Cres	225-3492
Fifeshire Cres 30-38 even & 39-57	Tara Graff	32 Fifeshire Cres	225-2230
Lacewood Court	Tammy DeGiovanni	5 Lacewood Court	226-9454
Parmalea Cres 2-10 even & 3-15 odd	Lillian Lee	5 Parmalea Cres	226-5188
Parmalea 12-32 even 88 & 103 Promenade	Barbara Campagna	12 Parmalea Cres	274-7296
Parmalea Cres 17-25 odd & 34-44 even	Linda Ieria	44 Parmalea Cres	226-3870
Tangmere Court	Sarah Bourque	8 Tangmere Court	225-6035
Tennyson Street	Jill Nimmo	33 Tennyson Street	228-0702
Treymore Court	Branka Jankovic	8 Treymore	565-2149
Tunbridge Court	Karen Deterding	8 Tunbridge Court	225-1788
Weatherwood Cres 1-10	Janet Page	1 Weatherwood Cres	274-7130
Weatherwood Cres 11-20	Barb Armstrong	12 Weatherwood Cres	727-0821
Weatherwood Cres 22-40	Anne Marie Mason	17 Weatherwood Cres	224-9480
Yewfield Court	Corey Fellows	12 Yewfield Court	680-8898

# COUNTRY PLACE COMMUNITY ASSOCIATION - VOLUNTEERS

**Name:** \_\_\_\_\_  
**Address:** \_\_\_\_\_  
**Tel.no.** \_\_\_\_\_  
**Cell no.** \_\_\_\_\_  
**Email:** \_\_\_\_\_

Please let us know in which capacity you would like to get more involved in our association.  
In addition, if you know any neighbours who might be interested in getting involved within our community or may share a particular talent from which our community may benefit, please pass along this information.

Please check the box(es) that apply:

**Social Events Committee**

Please specify which event(s):

- Country Place Social  
 Garage Sale  
 Park Spring Clean Up  
 Family Fun Day  
 Christmas Carolling & other charity drives  
 Other (specify suggestions): \_\_\_\_\_

Please specify in which way you could help out? (Examples include contacting vendors, supplies, organizing entertainment, events publicity, selling tickets, etc.)

\_\_\_\_\_  
\_\_\_\_\_  
\_\_\_\_\_

**Prince of Wales Expansion Committee**

**Newsletter** - Please specify in which way(s) you could help out (Examples include writing articles: editing, finding relevant stories of interest, distribution, etc.)

**Lights in the Park**

**Neighbourhood Watch Resurrection**

**Keeping track of reported suspicious neighbourhood activity and/or incidents**

**Membership Committee** (e.g., collecting names & contact numbers/addresses, membership info updates, membership fee collection)

**Liaison with other community associations of Ward 9**

**General Administrative Duties (for areas listed above)**

If you have any special interest or talent that may not have been listed and that you might like to share with the community association, please list below:

\_\_\_\_\_

Please return this form to your street representative or simply fill it out online at

[www.countryplaceca.ca](http://www.countryplaceca.ca)